



Community Eligibility Provision (CEP) Webinar

March 28th, 2022

1

Topics Covered in this Webinar

- Basics of CEP
- Eligibility Requirements
- CEP Cycles
- CEP in the SNTS
- Tools to increase ISP and maximize claiming percentages




2




2

What is CEP?

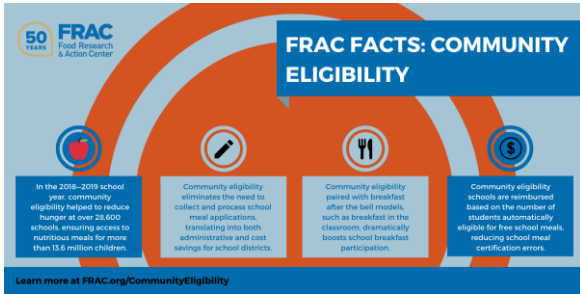
- Community eligibility allows high-need schools to offer breakfast and lunch to all students at no cost.
- There are no free & reduced household applications
- Uses Directly Certified student data as of April 1st of the prior school year
- Provision program that operates on a 4-Year Cycle



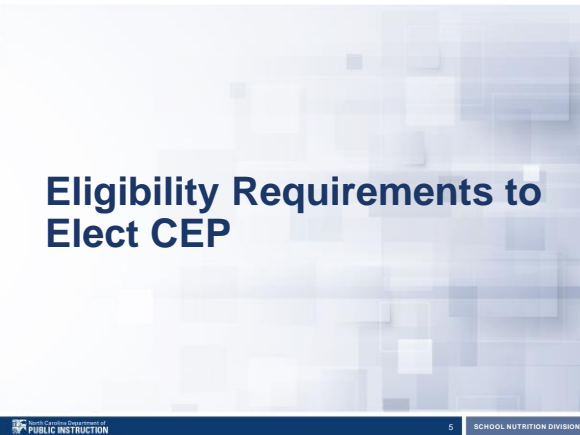
3



3



4



5

Eligibility Criteria

- Schools and LEAs with a minimum Identified Student Percentage (ISP; ≥ 40 percent) in the prior school year
- Identified students are those certified for free meals without the use of household applications
- Available to:
 - All schools in an LEA
 - A group of schools in an LEA
 - An individual school in an LEA

6

Group Criteria for CEP Implementation

- If the district-wide ISP is below 40%, partial CEP is an appropriate option
 - Group of schools
 - Individual schools
- The group of schools is weighted based on the enrollment of each school

7

Calculating ISP

$$\frac{\text{Identified Students}}{\text{Enrolled Students}} \times 100 = \text{Identified Student Percentage}$$



8

Identified Student Percentage (ISP)

- Who are **“Identified Students”**?
 - Children directly certified for free meals through data matching
 - SNAP, TANF, or Food Distribution Program on Indian Reservations (FDPIR)
 - Includes Extended Eligible students
 - Found in the SNTS Direct Certification system
 - Children who are certified for free school meals without an application because they are:
 - Homeless, migrant, enrolled in Head Start, or in foster care

9

Identified Student Percentage (ISP)

- Who are “*Enrolled Students*”?
 - Enrolled in a CEP participating school
 - Attending a CEP school
 - Has access to lunch or breakfast

10

Calculating Claim Reimbursements

- Example:
 - 50% ISP x 1.6 = 80
 - Therefore, 80% of the breakfasts and lunches would be reimbursed at the free reimbursement rate.
 - The remaining 20% would be reimbursed at the paid rate.
- What is the 1.6 multiplier?
 - The 1.6 multiplier is regulated by the USDA.

11

Examples

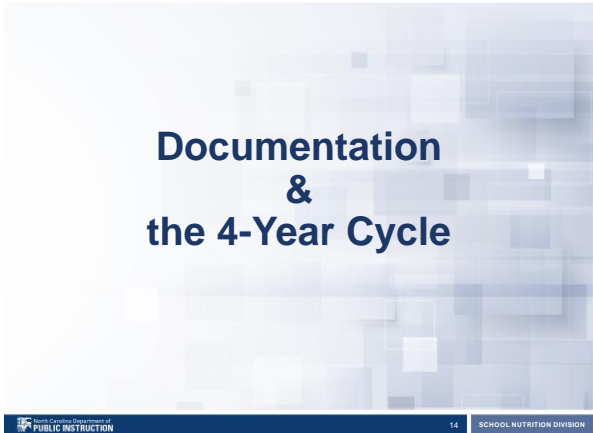
| ISP | (ISP multiplier) | Free | Paid |
|-----|------------------|------|------|
| 40% | x 1.6 | 64% | 36% |
| 45% | | 72% | 28% |
| 50% | | 80% | 20% |
| 55% | | 88% | 12% |
| 60% | | 96% | 4% |
| 65% | | 100% | 0% |

12

Increasing ISP

- Perform direct certification matches as often as possible
- Extend eligibility to students living in the same household with other students who are directly certified
- Connect with school support staff to identify any students who are newly homeless or have entered foster care
- Connect with local organizations that do SNAP outreach to families

13



14

Understanding the CEP Cycle

- The ISP is established as of April 1st in the school year prior to implementing CEP, and can be used for four school years
- Example:
 - The SFA's last Data Year cycle was established in April 2019, for Cycle Year SY 2019-2020.
 - Their 4-Year cycle would run from SY 2019-2020 through SY 2023-2024
 - The SFA would not need to re-establish until April 2023
- SFA's are allowed to re-establish before the end of the 4-Year cycle (i.e. at year 2 or 3)

15

Questions?



Thank you for attending this webinar!

28

Resources

- USDA's CEP Resource Center:
 - <https://www.fns.usda.gov/cn/community-eligibility-provision-resource-center>
- NCDPI School Nutrition:
 - <https://www.dpi.nc.gov/districts-schools/district-operations/school-nutrition/information-resources-subject/determining-household-eligibility-school-meals/community-eligibility-provision-cep>
- FRAC CEP webpage:
 - <https://frac.org/community-eligibility>

29

USDA Nondiscrimination Statement

In accordance with Federal civil rights law and U.S. Department of Agriculture (USDA) civil rights regulations and policies, the USDA, its Agencies, offices, and employees, and institutions participating in or administering USDA programs are prohibited from discriminating based on race, color, national origin, sex, disability, age, or reprisal or retaliation for prior civil rights activity in any program or activity conducted or funded by USDA.

Persons with disabilities who require alternative means of communication for program information (e.g. Braille, large print, audiotape, American Sign Language, etc.), should contact the Agency (State or local) where they applied for benefits. Individuals who are deaf, hard of hearing or have speech disabilities may contact USDA through the Federal Relay Service at (800) 877-8339. Additionally, program information may be made available in languages other than English.

To file a program complaint of discrimination, complete the USDA Program Discrimination Complaint Form, (AD-3027) found online at: How to File a Complaint, and at any USDA office, or write a letter addressed to USDA and provide in the letter all of the information requested in the form. To request a copy of the complaint form, call (866) 632-9992. Submit your completed form or letter to USDA by:

- (1) mail: U.S. Department of Agriculture Office of the Assistant Secretary for Civil Rights 1400 Independence Avenue, SW Washington, D.C. 20250-9410;
- (2) fax: (202) 690-7442; or
- (3) (3) email: program.intake@usda.gov.

This institution is an equal opportunity provider.

30
