

The Cross-Program Consolidated Monitoring Tool

Monitoring Cycle - 2021-2025

Part 8: Title I, Part D – State Operated Programs Element

August 30, 2022

Office of Federal Programs
North Carolina Department of Public Instruction

The CPCM Instrument

The CPCM monitoring instrument can be found on the Office of Federal Programs webpage.

First, click on the Cross-Program Monitoring Tab

Next, scroll to the [Consolidated Monitoring Instrument link](#).

Cross-Program Monitoring

What is the focus of our work?

The Federal Program Monitoring and Support Division supports approximately \$560,000,000 in federal funds provided to districts and schools each year. The primary role of the Division is to provide grants administration, program monitoring, data collection and reporting, and to facilitate the necessary technical assistance to ensure not only compliance but quality programs for students. Compliance is the first step toward program quality; monitoring is the springboard to providing technical assistance.

[Why do we monitor and how can we help?](#)

Monitoring Reviews

- **Compliance** – It's the law. Monitoring federal programs helps ensure that all children have a fair, equal, and significant opportunity to obtain a high-quality education. Compliance monitoring is intended to be a collaborative partnership between the State and local education agencies (LEAs) and public charter schools to ensure compliance with the Elementary and Secondary Education Act.
- **Technical Assistance** – We're here to help. State monitoring team members provide technical assistance during the review visit and beyond. It is not the State's intent to tell the LEA HOW to run its title programs, but rather to answer questions, facilitate dialogue, and exchange ideas and information for program improvement while, at the same time, meeting all federal requirements.
- **Building Relationships** – We're in this together. The Department of Public Instruction's main objective is to raise student achievement for North Carolina's school children. Through cooperative assessment of the federal programs, between

[Consolidated Monitoring Presentation](#)

[Standard Operating Procedures Manual](#)

[Consolidated Monitoring Instrument](#)

Federal Program Monitoring

[21st Century Community Learning Centers](#)

[Comprehensive Continuous Improvement Plan](#)

Cross-Program Monitoring

[Emergency Assistance for Nonpublic Schools \(EANS\)](#)

[Equitable Services for Private Schools](#)

[Every Student Succeeds Act \(ESSA\)](#)

[Elementary and Secondary Schools Emergency Relief \(ESSER\)](#)

[Extended Learning and Integrated Student Supports \(ELISS\) Competitive Grant Program](#)

[Federal Program Contacts by Staff Member](#)

[Federal Program Data Collection](#)

[Foster Care Education](#)

[Homeless Program Monitoring](#)

[ICARES](#)

[Migrant Education](#)

[Monitoring Neglected and Delinquent Students](#)

[Rural Education Achievement Program](#)

Element #22

State Agency Title I, Part D Subpart 1

ESSA Citations: 1411 [20 U.S.C. 6431], 1412 [20 U.S.C. 6432], 1413 [20 U.S.C. 6433], 1414 [20 U.S.C. 6434], 1415 [20 U.S.C. 6435], 1416 [20 U.S.C. 6436], 1417 [20 U.S.C. 6437], 1418 [20 U.S.C. 6438], 1419 [20 U.S.C. 6439]



Element #22 - Examples of Compliance

Areas of Compliance <i>State agencies must...</i>	Examples of Compliance
<ul style="list-style-type: none"> <input type="checkbox"/> offer a regular program of instruction for at least 20 hours per week for youth unless served in an adult correctional facility (15 hours per week is permissible) 	<ul style="list-style-type: none"> <input type="checkbox"/> Title I, Part D Plan <input type="checkbox"/> Schedule of activities for Title I, Part D services
<ul style="list-style-type: none"> <input type="checkbox"/> implement programs and projects that are designed to support educational services that afford youth an opportunity to meet challenging State academic achievement standards 	<ul style="list-style-type: none"> <input type="checkbox"/> Title I, Part D Plan <input type="checkbox"/> Schedule of activities for Title I, Part D services <input type="checkbox"/> Number of students served (exclude names / identifiers)
<ul style="list-style-type: none"> <input type="checkbox"/> assess the education needs of all eligible children and youth in eligible institutions 	<ul style="list-style-type: none"> <input type="checkbox"/> Assessment instrument/tools <input type="checkbox"/> Ranking of students (if unable to serve all students) including records of youth completing incarceration within 2 years (exclude names / identifiers) <input type="checkbox"/> Individual Education Plans (IEPs - redact names / identifiers)
<ul style="list-style-type: none"> <input type="checkbox"/> provide appropriate professional development for teachers and other staff 	<ul style="list-style-type: none"> <input type="checkbox"/> Title I, Part D Plan <input type="checkbox"/> Staff development plans <input type="checkbox"/> Teacher professional development plans
<ul style="list-style-type: none"> <input type="checkbox"/> coordinate programs implemented with funds under this part with existing programs 	<ul style="list-style-type: none"> <input type="checkbox"/> List of community colleges/business agencies and other educational agencies and existing programs <input type="checkbox"/> Records of transition services

Element #22 - Examples of Compliance

Areas of Compliance <i>State agencies must...</i>	Examples of Compliance
<ul style="list-style-type: none"> <input type="checkbox"/> evaluate the effectiveness of the program or project and describe how the State agency will use the results of the most recent evaluation under section 8601, which will be used to plan and improve the program 	<ul style="list-style-type: none"> <input type="checkbox"/> Program evaluations <input type="checkbox"/> Title I, Part D plan
<ul style="list-style-type: none"> <input type="checkbox"/> use funds in a manner consistent with the purpose of this federal award 	<ul style="list-style-type: none"> <input type="checkbox"/> Equipment inventory <input type="checkbox"/> Description of program including academic assessment of student needs during intake (redact names / identifiers)
<ul style="list-style-type: none"> <input type="checkbox"/> ensure Institution-Wide Projects are conducted in a manner that upgrades the entire educational effort of the institution 	<ul style="list-style-type: none"> <input type="checkbox"/> Comprehensive plan <input type="checkbox"/> Staff development plans <input type="checkbox"/> Agendas, minutes, etc. to verify consultation during planning <input type="checkbox"/> Teacher professional development plans
<ul style="list-style-type: none"> <input type="checkbox"/> reserve not less than 15 percent and not more than 30 percent of the amount such agency receives under this part for provision of transition services 	<ul style="list-style-type: none"> <input type="checkbox"/> Comprehensive plan describing activities <input type="checkbox"/> Records of transition activities (redact names / identifiers) • <input type="checkbox"/> Budgets, purchase orders, payroll reports, etc. <input type="checkbox"/> Amount / percentage of funds reserved for transitions: \$ ___ / ___% <input type="checkbox"/> Name of transition coordinator for site: _____

A decorative graphic on the left side of the slide features a light blue background with several computer monitors. The monitors are arranged in a grid-like pattern, with some showing various content like charts, text, and images. The top monitor shows a landscape with mountains and a boat. The middle monitor shows a pink header with a white icon and several colorful icons below. The bottom monitor shows a yellow header with several colorful icons below. The monitors are stylized with black frames and stands.

Video Resources – Required Viewing

Required Video #1:

Preparing for Your Upcoming Monitoring Visit? Monitoring Event Guidelines Presentation

Required Video #2:

CPCM Instrument Part 1: The Consolidated Program Elements (CPCM Elements 1-5)

Video Resources – Optional Viewing

CPCM Instrument Part 2: Title I, Parts A & D (Elements 6-11)

CPCM Instrument Part 3: Title II, Part A – (Element 12)

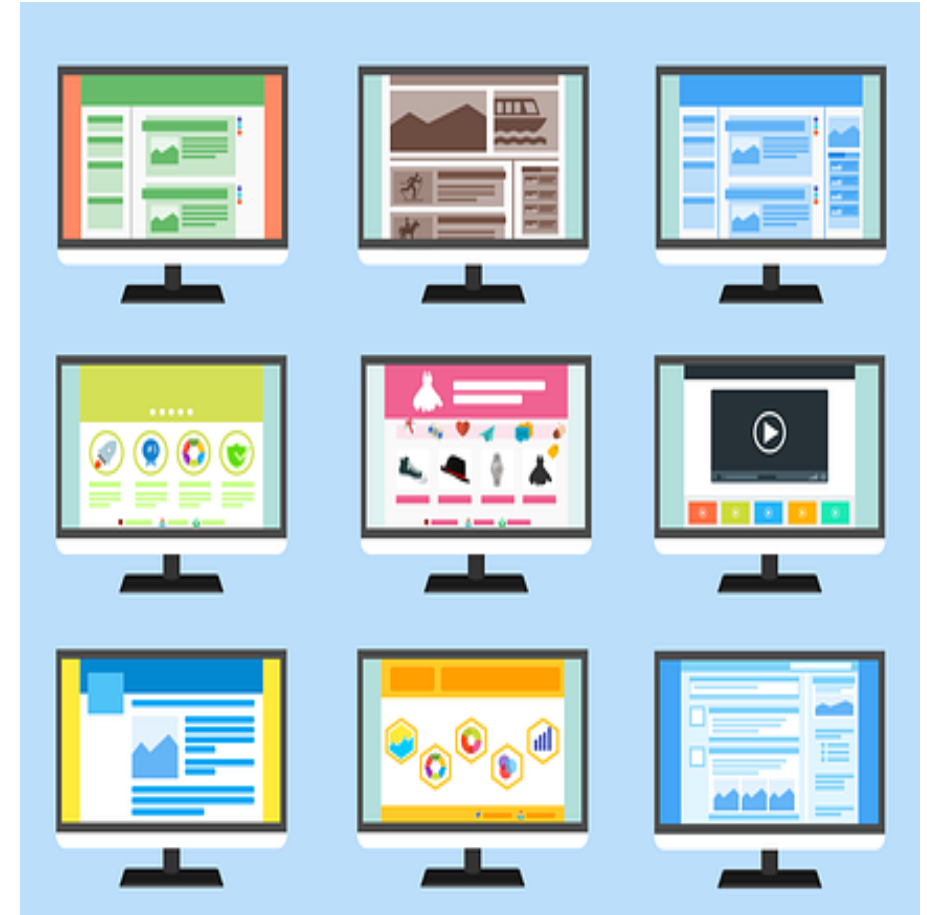
CPCM Instrument Part 4: Title IV, Part A – (Element 13)

CPCM Instrument Part 5: Title III, Part A – (Elements 14-17)

CPCM Instrument Part 6: Title I, Part C- MEP (Elements 18-20)

CPCM Instrument Part 7: Title V, Part B – RLIS (Element 21)

CPCM Instrument Part 8: Title I, Part D – State Operated Programs (Element 22)



We are here to support YOU!

Office of Federal Programs Leadership Team

Dr. LaTricia Townsend, Director
Tina Letchworth, Asst. Director
Alex Charles, Section Chief~ West
Melissa Eddy, Section Chief~ East

State Operated Programs Support Staff

Laura Popp, Consolidated Administrator
Laura.Popp@dpi.nc.gov

Dr. Nick Anderson, ESSER Program Administrator
Nick.Anderson@dpi.nc.gov

