



Public Schools of North Carolina  
State Board of Education  
Department of Public Instruction

---

# Report to the North Carolina General Assembly

---

Broaden Successful Participation in  
Advanced Courses

*SL 2013-360 (SB 402, Budget Bill), sec.  
8.27 (h)*

*SL 2014-15, sec. 12 as amended by  
2014-15, sec. 49.5*

*G.S. 115C-174.26*

---

**Date Due: December 15, 2016**

Report # 27

DPI Chronological Schedule, 2016-2017

## **STATE BOARD OF EDUCATION**

SBE VISION: Every public school student will graduate ready for post-secondary education and work, prepared to be a globally engaged and productive citizen.

SBE MISSION: The State Board of Education will use its constitutional authority to lead and uphold the system of public education in North Carolina.

### **WILLIAM COBEY**

Chair :: Chapel Hill – At-Large

### **BECKY TAYLOR**

Greenville – Northeast Region

### **TODD CHASTEEN**

Blowing Rock – Northwest Region

### **A.L. COLLINS**

Vice Chair :: Kernersville – Piedmont Triad Region

### **REGINALD KENAN**

Rose Hill – Southeast Region

### **WAYNE MCDEVITT**

Asheville – Western Region

### **DAN FOREST**

Lieutenant Governor :: Raleigh – Ex Officio

### **AMY WHITE**

Garner – North Central Region

### **ERIC DAVIS**

Charlotte – At-Large

### **JANET COWELL**

State Treasurer :: Raleigh – Ex Officio

### **OLIVIA OXENDINE**

Lumberton – Sandhills Region

### **PATRICIA N. WILLOUGHBY**

Raleigh – At-Large

### **JUNE ST. CLAIR ATKINSON**

Secretary to the Board :: Raleigh

### **GREG ALCORN**

Salisbury – Southwest Region

## **NC DEPARTMENT OF PUBLIC INSTRUCTION**

**June St. Clair Atkinson, Ed.D., State Superintendent**  
**301 N. Wilmington Street :: Raleigh, North Carolina 27601-2825**

In compliance with federal law, the NC Department of Public Instruction administers all state-operated educational programs, employment activities and admissions without discrimination because of race, religion, national or ethnic origin, color, age, military service, disability, or gender, except where exemption is appropriate and allowed by law.

### **Inquiries or complaints regarding discrimination issues should be directed to:**

Dr. Rebecca Garland, Deputy State Superintendent  
6368 Mail Service Center, Raleigh, NC 27699-6368 :: Telephone: (919) 807-3200 :: Fax: (919) 807-3388

Visit us on the Web :: [www.ncpublicschools.org](http://www.ncpublicschools.org)

## **Report to the North Carolina General Assembly: §115C-83.4A ~ Advanced Courses**

In response to G.S.115C-83.4A, the North Carolina Department of Public Instruction (NCDPI) initially established the NC Advanced Placement Partnership (NCAPP) in May 2014 with the College Board. The NCAPP continues with its purpose to broaden access and successful participation in advanced coursework in North Carolina's (NC) public schools. According to G.S. 115C-83.4A, "it is the intent of the State of North Carolina to enhance accessibility and encourage students to enroll in and successfully complete more rigorous advanced courses to enable success in postsecondary education for all students."

The NCAPP continues to respond to the legislation through various efforts. In 2015-16, twenty-three NC school districts participated in the NCAPP as "targeted districts" with focused support and technical assistance. In 2016-17, twenty-one low-performing districts continue with the NCAPP. NCAPP also provides state-wide support through professional development opportunities open to all of the state, both face-to-face and online opportunities. In addition, the General Assembly appropriated funds to pay for all Advanced Placement (AP) and International Baccalaureate Diploma Programme (IB) exams for public school and charter school students who were enrolled in the corresponding AP/IB courses beginning in 2014-15. College Board and the NCDPI are continuing to work together on these various aspects to ensure continued success of the NCAPP.

The NCAPP spearheads NC's progress with AP course enrollment and AP exam participation. The state's most recent data from NCDPI and College Board show continued gains in areas of course enrollment, exam participation and exam performance.

- The number of AP Exam-Takers in North Carolina's public schools increased 3.7% from 2015 to 2016, averaging a 22% increase the last two years. In the 23 target NCAPP districts, the number of students taking AP exams increased 17% in 2015 over the 2014 year.

- The number of AP Exams taken in North Carolina’s public schools increased 3.6% from 2015 to 2016, averaging a 23% increase the last two years.
- The number of AP Examinees scoring 3 or better on AP exams in North Carolina’s public schools increased 4.6% from 2015 to 2016, averaging a 13% increase the last two years.

This continued success is a result of hard work by NC’s teachers and districts. With NCAPP’s sustained efforts of professional development and technical assistance, the State Board of Education and NCDPI expect continued progress to increase access and successful participation in Advanced Placement courses across NC and further meet the intent of the legislation.

**Report Requirements**

This report responds to the requirements of the legislation enacted in SL 2013-360, *Broaden Successful Participation in Advanced Courses*. The State Board of Education/NCDPI report fulfills some requests, while others are fulfilled by the companion College Board NCAPP Report.

The following table reviews the report requirements and indicates which report addresses the required information:

The North Carolina Advanced Placement Partnership's report to the NCDPI and the assessment of that report.	State Board of Education Report
Number of students enrolled in advanced courses and participating in advanced course examinations, including demographic information by gender, race, and free and reduced-price lunch status.	State Board of Education Report  College Board NCAPP Report

Student performance on advanced course examinations, including information by course, local school administrative unit, and school.	College Board NCAPP Report
Number of students participating in 10th grade PSAT/NMSQT testing.	College Board NCAPP Report
Number of teachers attending summer institutes offered by the North Carolina Advanced Placement Partnership.	College Board NCAPP Report
Distribution of funding appropriated for advanced course testing fees and professional development by local school administrative unit and school.	State Board of Education Report
Status and efforts of the North Carolina Advanced Placement Partnership.	State Board of Education Report  College Board NCAPP Report

### **Basic Status and Efforts of NCAPP**

#### **NCAPP Targeted Districts**

NCDPI and College Board invited low-performing districts to continue as part of the NCAPP with focused participation. Twenty-one of the 23 school districts who participated last year decided to continue with the NCAPP for 2016-17. The two districts that are no longer participating at this level will still be working with NCAPP but in a different manner due to needing other types of services than those being provided for teachers. The target school districts are low-performing in the areas of ACT composite, math rigor, overall performance composite scores, and AP participation and performance. NCAPP and NCDPI will be re-evaluating the districts participating based on new levels of need in the upcoming year.

### 2016-17 NCAPP Targeted Districts

Anson County	Bertie County	Clinton City	Columbus County	Duplin County
Edgecombe County	Greene County	Hoke County	Lee County	Lenoir County
Lexington City Schools	Montgomery County	Nash-Rocky Mount	Pitt County	Richmond County
Robeson County	Sampson County	Scotland County	Thomasville City	Warren County
Wayne County				

### NCAPP State-Wide Efforts

In addition to focused district support through professional development and technical assistance, NCAPP continues to work with state-wide efforts as well. In particular, select numbers of teachers from school districts across the state are invited to participate in content-based professional development opportunities throughout the year. Further state-wide efforts with regional technical assistance through the SBE regions and state-wide webinars to support systemic change and program development have also been developed and shared.

## **NCDPI Response to NCAPP Report**

NCDPI received the College Board's NCAPP Annual Report in September 2016 with revisions in October 2016, based on an NCDPI request. The report reflects the progress of the NCAPP over for the last year as well as exam performance information.

NCDPI is pleased with the progress of the NCAPP and the Annual Report submitted by College Board. The College Board is committed to serving NC school districts and continues to partner with NCDPI to ensure effective implementation.

## **Distribution of NCAPP Funding for AP and IB Exam Fees**

For the payment of AP Exams, NCDPI paid College Board **\$11,113,328** to support NC's public school students and families. NCDPI and College Board have developed a state-wide invoicing system to facilitate effective payment and lessen the burden of high schools and their districts.

NCDPI particularly notes the continued success of the implementation of the state-covered AP exam fees. College Board and NCDPI continue to work together with NC's school districts and high schools and charter schools to improve this process. NCDPI appreciates the hard work of all involved to ensure that students' test fees were covered.

For the payment of IB Exams and Fees, NCDPI paid International Baccalaureate Organization (IBO) **\$1,308,658** to support NC's public school students and families. NCDPI provided a guaranteed allotment (PRC 046) to school districts to facilitate payment of IB Exam fee invoices and also piloted a state-invoice process with a small group of districts. For the upcoming year, NCDPI and IBO have developed a full state-invoice process to better facilitate payment and lessen the burden of billing on high schools and their districts.

## **AP and IB Current Course Enrollment Data**

Based on NCDPI data, the number of students who enrolled in at least one AP course continues to increase, and AP course enrollments continue to increase as well. In 2016-17, 77,920 students took at least one AP course. These students represent 154,916 course enrollments. This represents an 8% increase in course enrollments and a 1% increase in number of students. In 2015-16, 77,392 students took at least one AP course. This was increase of 2,634 students which represents a 4% increase. These students represent 142,344 course enrollments. In 2014-15, 74,758 students took at least one AP course. This was also an increase of 4% from 2013-14 with a total of 71,655 students.

For the current 2016-17 student enrollment data for AP and IB courses in NC's 115 traditional LEAs and Charter Schools, see the following **Table I and Table II**. The student enrollment data is disaggregated by gender, race/ethnicity, and economically disadvantaged status. All student data is masked at the appropriate level.

For further data regarding AP and IB course exams, please see the NC Report Cards at <http://www.dpi.state.nc.us/src/> and the NCDPI Accountability website at <http://www.ncpublicschools.org/accountability/reporting/sat/>.

## **Companion College Board NC AP Partnership Annual Report**

Please refer to the following report prepared by College Board and submitted to NCDPI for remaining report requirements.



**Table 1: Current 2016-17 NC Student Enrollment in Advanced Placement (AP) Courses**

AP Course Name	TOTAL	GENDER		RACE and ETHNIC GROUPS								ED Status
	Total Students	Female	Male	Asian	Amer. Indian	Black	Hispanic	Pacific Islander	White	Two or More	Un-known	Economically Disadvantaged Students
AP Research	233	132	101	24	<10	22	19		158	<10		20
AP Seminar	805	494	311	88	<10	119	97		473	27		174
AP Computer Science Principles	1036	213	823	90	<10	104	94		714	31		169
AP English Language and Composition	16763	10846	5917	1116	106	2176	1445	20	11331	569		3600
AP English Literature and Composition	14260	9236	5024	886	83	2213	1225	15	9361	478		3127
AP Chinese Language and Culture	82	44	38	70					<10	<10		15
AP French Language and Culture	319	234	85	34	<10	34	25		212	13		36
AP German Language and Culture	113	47	66	<10		<10	<10		96	<10		<10
AP Italian Language and Culture	0											
AP Japanese Language and Culture	27	15	12	<10		<10			10	<10		<10
AP Latin	105	61	44	16		<10	<10		75	<10		<10
AP Spanish Language and Culture	1448	953	495	121	<10	124	525	<10	635	37		436

AP Spanish Literature and Culture	175	110	65	14		10	75		68	<10		48
AP Calculus AB	10538	5173	5365	1203	63	994	736	12	7204	326		1849
AP Calculus BC	4639	2148	2491	910	12	297	249	<10	3021	146		529
AP Computer Science	1537	374	1163	289	12	145	88	<10	948	52		236
AP Statistics	10541	5773	4768	1027	49	1120	799	11	7191	344		1813
AP Biology	6797	4297	2500	652	71	673	560	<10	4585	248		1362
AP Chemistry	3255	1686	1569	453	20	223	194	<10	2256	103		485
AP Environmental Science	14163	7717	6446	1129	69	1517	1054	10	9935	449		2303
AP Physics C: Electricity and Magnetism	155	31	124	45		<10	<10	<10	96	<10		<10
AP Physics C: Mechanics	263	80	183	48	<10	15	<10		183	<10		28
AP Physics 1: Algebra-Based	3023	1089	1934	528	10	202	217	<10	1990	72		395
AP Physics 2: Algebra-Based	465	127	338	99	<10	15	28		308	13		30
AP Comparative Government and Politics	703	357	346	96	<10	39	39		503	24		47
AP European History	2277	1241	1036	155	<10	184	179	<10	1669	85		424
AP Human Geography	8567	4785	3782	781	31	912	748	<10	5822	263		1521
AP Macroeconomics	864	359	505	148		50	48		591	27		65
AP Microeconomics	731	322	409	65	<10	74	40	<10	536	13		98
AP Psychology	16181	10177	6005	1246	67	2509	1483	22	10299	554		3379

AP United States Government and Politics	6775	3633	3141	414	46	633	494	<10	4972	212		1295
AP United States History	18577	10616	7961	1330	148	2372	1596	19	12528	584		3995
AP World History	6540	3564	2976	593	40	723	478	<10	4471	229		1315
AP Art History	794	606	188	65	<10	64	63		563	33		108
AP Music Theory	846	391	455	71	<10	81	59		599	31		149
AP Studio Art: 2-D Design	809	625	184	44	<10	79	78	<10	569	32		185
AP Studio Art: 3-D Design	100	73	27	<10	<10	<10	17		59	<10		38
AP Studio Art: Drawing	410	320	90	33	<10	38	51	<10	267	18		98
<b>TOTAL STUDENTS</b>	<b>154916</b>	<b>87949</b>	<b>66967</b>	<b>13903</b>	<b>870</b>	<b>17789</b>	<b>12825</b>	<b>162</b>	<b>104306</b>	<b>5059</b>	<b>0</b>	<b>29399</b>

**Table 2: Current 2016-17 NC Student Enrollment in International Baccalaureate (IB) Courses**

IB Course Name	TOTAL	GENDER		RACE and ETHNIC GROUPS								ED Status
	Total Students	Female	Male	Asian	Amer. Indian	Black	Hispanic	Pacific Islander	White	Two or More	Un-known	Economically Disadvantaged Students
IB Personal and Professional Skills SL	68	48	20	<10		<10	9		53	<10		<10
IB Theory of Knowledge	2581	1628	953	191	10	529	251	<10	1524	75		582
IB Language A (English)- Language & Literature SL	62	39	23	<10		<10	<10		48	<10		<10
IB Language A (English)- Language & Literature HL	724	493	231	47	<10	212	62		382	17		244
IB Language A (English)- Literature SL	469	291	178	41	<10	83	50		278	15		122
IB Language A (English)- Literature HL	1645	1025	620	107	<10	310	179		995	49		316
IB Language A-Self-Taught SL	36	20	16				30		<10	<10		23
IB Language B-French SL	443	308	135	34	<10	98	66		228	15		120
IB Language B-French HL	38	33	<10	<10	<10	<10	<10		26			<10
IB Language B-German SL	39	18	21	<10		<10	<10		31	<10		<10

IB Language B- German HL	<10		4						<10			
IB Language B- Latin SL	145	93	52	12	<10	<10	<10		115	<10		12
IB Language B- Latin HL	26	16	10	<10					19	<10		<10
IB Language B- Mandarin SL	56	37	19	10		<10	<10		31	<10		<10
IB Language B- Mandarin HL	17	<10	10	12					<10	<10		<10
IB Language B- Spanish SL	1458	942	516	91	<10	359	152	<10	815	36		370
IB Language B- Spanish HL	203	123	80	<10	<10	36	39		111	<10		55
IB Spanish ab initio	<10	<10				<10						<10
IB Language B - Hebrew SL	<10		<10					<10	<10			
IB Language B: Russian SL	<10	<10	<10						<10			
IB Language B: Russian HL	<10	<10	<10	<10					<10			
IB Computer Science SL	15	<10	12	<10		<10	<10		<10	<10		<10
IB Computer Science HL	10	<10	<10	<10			<10		<10	<10		
IB Mathematical Studies SL	1260	831	429	53	<10	350	152	<10	664	35		408
IB Mathematics SL	1239	745	494	117	<10	203	96		781	35		196
IB Mathematics HL	127	62	65	16		10	13		84	<10		15
IB Further Math HL	23	10	13	18			<10		<10	<10		<10
IB Biology SL	502	366	136	33	<10	119	51		285	13		133

IB Biology HL	1212	799	413	96	<10	247	116	<10	711	32		286
IB Chemistry SL	459	287	172	45	<10	81	59		256	17		109
IB Chemistry HL	137	60	77	13		<10	<10		113	<10		10
IB Physics SL	236	93	143	24		29	26		148	<10		39
IB Physics HL	135	51	84	14	<10	<10	<10		109	<10		<10
IB Sports Exercise and Health Science SL	185	113	72	<10		39	12		122	<10		25
IB Environmental Systems and Societies SL	387	245	142	22	<10	115	71		161	16		143
IB History of the Americas HL	2286	1448	838	175	<10	494	235	<10	1306	67		582
IB Economics SL	34	11	23	<10		<10			30			<10
IB Economics HL	27	<10	21	<10			<10		21			
IB Geography SL	23	<10	14	<10		<10	<10		16	<10		<10
IB Philosophy SL	283	157	126	12	<10	99	26		133	<10		116
IB Philosophy HL	19	10	<10	<10		<10	<10		15			<10
IB Twentieth Century World Topics SL	493	303	190	47	<10	67	36		327	15		61
IB Psychology SL	542	354	188	30	<10	107	85		305	13		166
IB Psychology HL	351	252	99	27	<10	96	15	<10	200	11		71
IB Global Politics SL	60	37	23	<10	<10	<10	10		35	<10		13
IB World Religions SL	14	10	<10	<10		<10	<10		<10			14
IB Twentieth Century World Topics HL	176	106	70	<10	<10	55	19		89	<10		42
IB Social and Cultural Anthropology SL	26	15	11				<10		23	<10		

IB Dance SL	21	20	<10	<10		<10			16			1
IB Dance HL	17	17		<10		<10	<10		10			5
IB Film SL	140	78	62	<10	<10	26	12		86	<10		29
IB Film HL	124	76	48	19		<10	<10		90	<10		5
IB Music SL	59	35	24	<10		<10	<10		42	<10		7
IB Music HL	<10	<10	<10	<10					<10			1
IB Theatre SL	103	71	32	<10		28	16		51	<10		37
IB Theatre HL	38	28	10			10	<10		24			5
IB Visual Arts SL	201	158	43	15		53	23		102	<10		71
IB Visual Arts HL	229	182	47	<10	<10	61	20	<10	137	<10		63
IB Business Mgmt	203	93	110	13	<10	44	19		123	<10		51
IB Information Tech in a Global Society	113	54	59	<10		9	<10		94	<10		8
<b>TOTAL STUDENTS</b>	<b>22793</b>	<b>14339</b>	<b>8454</b>	<b>1675</b>	<b>88</b>	<b>4695</b>	<b>2338</b>	<b>11</b>	<b>13313</b>	<b>673</b>	<b>-</b>	<b>5351</b>

IB Courses with no student enrollments this year.

IB Language B- Japanese SL
IB Language B- Japanese HL
IB French ab initio
IB German ab initio
IB Japanese ab initio
IB Mandarin ab initio
IB Design Technology SL
IB Design Technology HL
IB Geography HL
IB History of Europe HL
IB Social and Cultural Anthropology HL

# NC Advanced Placement Partnership Annual Report

Sept. 16, 2016

## I. Mission and Purpose of the NC AP Partnership:

The mission of the Partnership between The College Board and the state of North Carolina is to prepare, inspire, and connect students to postsecondary success and opportunity, with a particular focus on minority students and students who are underrepresented in postsecondary education. The purpose of the Partnership is therefore to assist in improving college readiness of secondary students and to assist secondary schools to ensure that students have access to high-quality, rigorous academics with a focus on access to Advanced Placement courses.

## II. Driving Governance:

G.S. 115C-83.4A. Advanced Courses. According to statute, it is “the intent of the State of North Carolina to enhance accessibility and encourage students to enroll in and successfully complete more rigorous advanced courses to enable success in postsecondary education for all students.”

## III. 2015-2016 Results:

### Teacher Professional Development:

- Number of teachers across the state attending 2016 AP Summer Institutes through NCAPP scholarships: 450 attendees
- Number of teachers across the state attending other professional development through NCAPP scholarships:
  - Fall Leadership Colloquium Oct. 6-7, 2015 44 attendees
  - AP Teacher Symposium Oct. 8-9, 2015 100 attendees
  - Fall AP One-Day Workshops Oct.- Nov. 2015 139 scholarships awarded
  - Pre-AP One-Day Workshops Sept., Oct. 2015; April, 2016 129 scholarships awarded
  - Middle Level Colloquium April 19-20, 2016 39 attendees

### AP Course Participation:

- Enrollment in advanced courses, including demographic information by gender, race, and FRL status.  
[DPI to provide enrollment data](#)

### AP Exam Performance (see p. 5 - 18 for school level details):

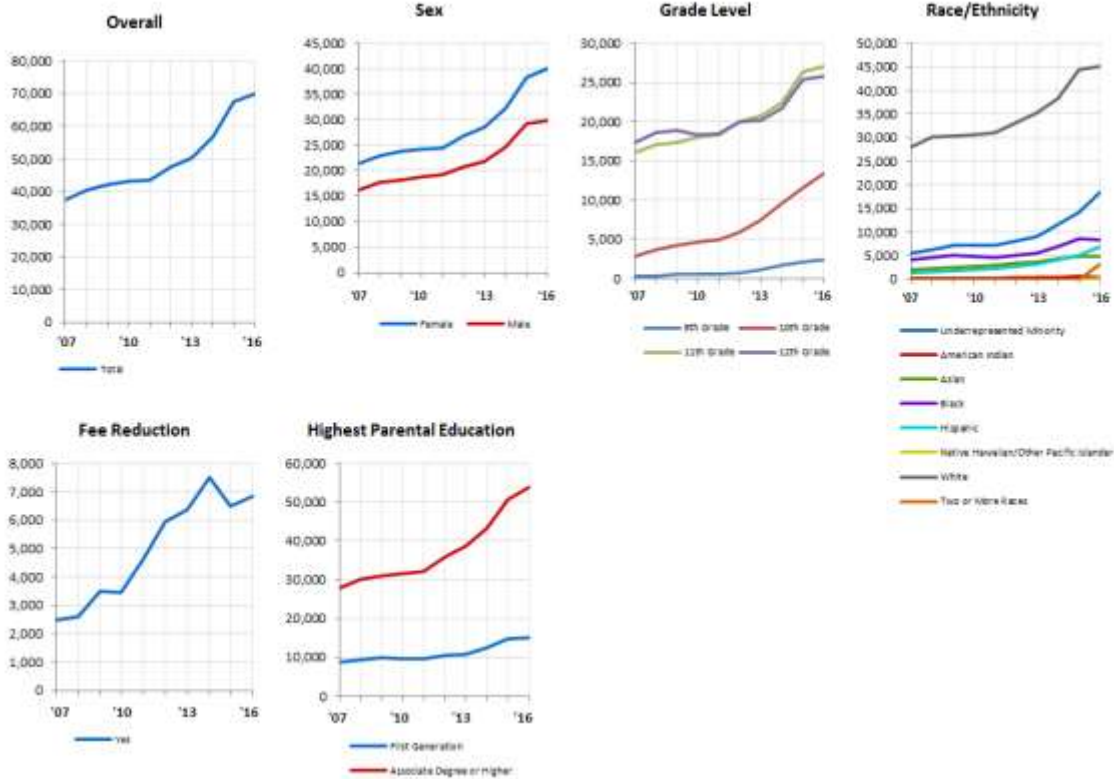
- The number of AP Exam-Takers in North Carolina’s public schools increased 3.7% from 2015 to 2016, as compared to a 5.3% increase in AP Exam-Takers in public schools nationwide. In total 69,957 NC public school students took 129,538 AP exams, with 66,646 receiving a proficient score. This represents a 4.6 % increase of examinees that attained 3+ score over last year.
- Important Note: Beginning in June 2015, the Race/Ethnicity question on AP exams changed from a 1-part 'check one' to a 2-part 'check all'. Some expected patterns due to this new question in the Race/Ethnicity data for 2016 include:
  - An increase in Hispanic students (based on new rule, students are classified as Hispanic if they indicate Cuban, Mexican, Puerto Rican, or other Hispanic to the first question, regardless of what they go on to answer for the second question)
  - A decrease in American Indian, Asian, Black, and White students (many of these students may now be classified as Hispanic, Two or More Races, or Native Hawaiian/Other Pacific Islander)
  - Decrease in Other due to this no longer being a possible classification for the new question.



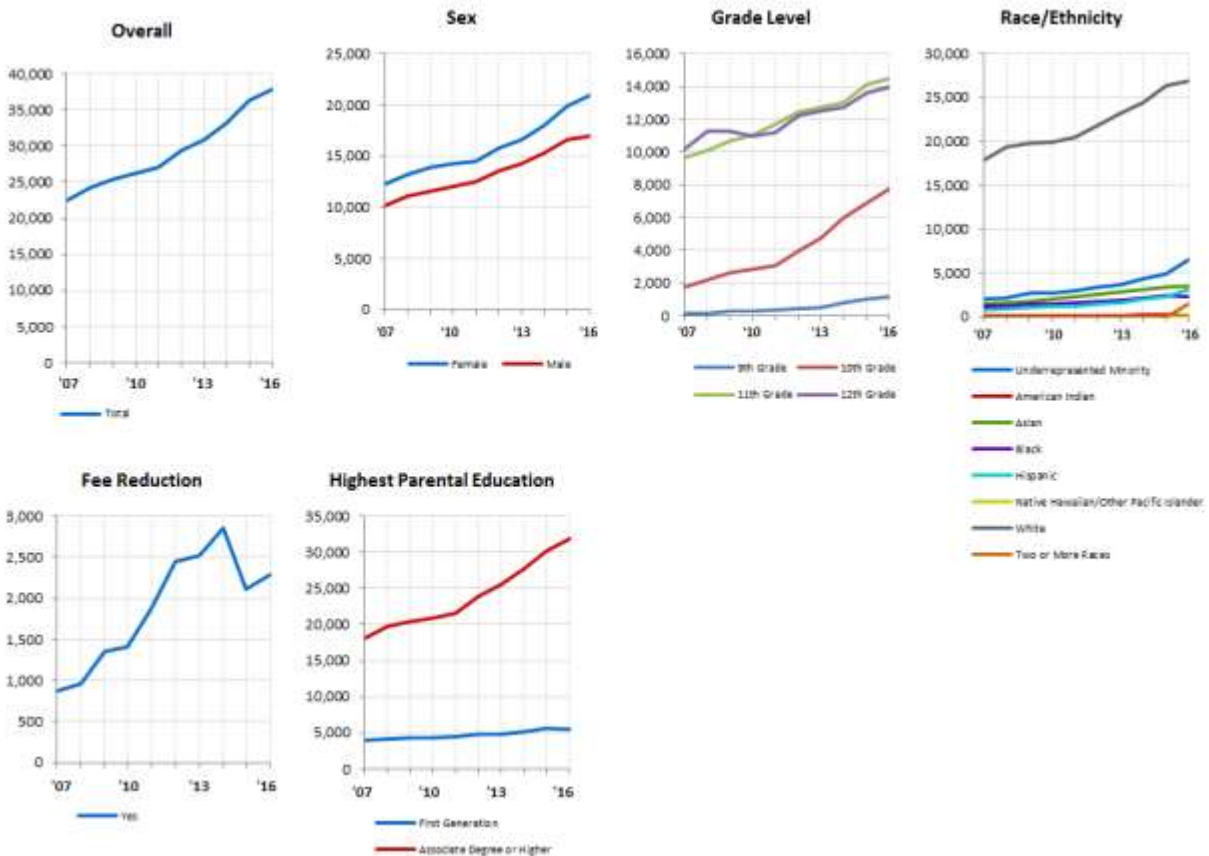
# NC Advanced Placement Partnership Annual Report

Sept. 16, 2016

## North Carolina All Public Schools, AP Examinees Trend Data 2007-2016



## North Carolina All Public Schools, AP Examinees who Scored 3 or Higher Trend Data 2007-2016



## NC Advanced Placement Partnership Annual Report

Sept. 16, 2016

### Target District AP Performance (see p. 19 - 20 for school level details):

- The number of students taking AP exams in the 23 targeted NCAPP districts increased 2.1% over last year, from 4,030 students in 2015 to 4,115 students in 2016.
- The number of AP exams taken by students in the 23 targeted NCAPP districts increased 4.4% over last year, from 6,533 exams in 2015 to 6,821 exams in 2016.
- The number of AP exams receiving a score of 3, 4, or 5 taken by students in the 23 targeted NCAPP districts increased 3.4% over last year, from 1,939 exams in 2015 to 2,006 exams in 2016.

### PSAT Participation:

- Number of students participating in 10<sup>th</sup> grade PSAT/NMSQT testing: **October 2015: 37,439 Tests; 2016 orders as of Sept. 2, 2016: 34,769 tests.** Students taking the SAT with the PSAT/NMSQT as a Junior and Sophomore or younger continue to score higher than the national average (SAT Critical Reading 540 – 48 points higher than the national average; SAT Mathematics 551 – 50 points higher than the national average; SAT Writing 520 – 42 points higher than the national average) while students taking the SAT without the PSAT/NMSQT continue to score lower than the national average (SAT Critical Reading 453 – 39 points below the national average; SAT Mathematics 461 – 40 points below the national average; SAT Writing 427 – 51 points below the national average).

### Funding Distribution:

- Distribution of funding appropriated for advanced course testing fees and professional development by local school administrative unit and school.  
*DPI to provide funding distribution*

## IV. Current status and upcoming events for the NC AP Partnership – 2016 - 2017:

### District Support - Ongoing:

- College Board staff provide extensive and on-going professional development and data analysis sessions to administrators, counselors, and teachers in districts as needs arise.

### AP Mentoring, 2016-17 School Year

- 115 scholarships are available to AP English Literature and Composition and AP U.S. History teachers from each LEA. AP Mentoring is a new teacher-to-teacher support program from the College Board for teachers in these disciplines of all experience levels, which connects teachers interested in enhancing their practice with mentor teachers who have deep knowledge of AP and a record of student success.

### AP Insight, 2016-17 School Year

- AP Insight is a new blended learning tool for both AP teachers and AP students in AP Biology, AP Chemistry, AP Calculus AB, AP U.S. History, and AP World History courses. Teachers use AP Insight to create a road map in their own syllabus, target challenge areas, and help students connect building blocks to master the course. 69 teacher scholarships and 1,725 student scholarships are available to target district teachers and students in these courses.

## NC Advanced Placement Partnership Annual Report

Sept. 16, 2016

### **Fall Leadership Colloquium Oct. 4-5<sup>th</sup>, 2016:**

- 42 administrators from the 21 NCAPP target districts are invited to attend this two day professional development on increasing rigor and growing AP programs

### **AP Teacher Symposium Oct. 6-7<sup>th</sup>, 2016:**

- 115 AP teachers from low AP performing districts are invited to attend this two day professional development on best practices in teaching AP courses. This audience includes AP teachers from the 21 NCAPP target districts as well as other lower AP performing districts to expand impact across the state.

### **Fall AP One-Day Workshops Oct.-Nov. 2016:**

- 115 Scholarships will be made available to AP teachers from low AP performing districts for these course-specific AP One-Day Workshops. This audience includes AP teachers from the 21 NCAPP target districts as well as other lower AP performing districts to expand impact across the state.

### **Middle Level Colloquium March, 2017:**

- 42 middle school administrators from the 21 NCAPP target districts are invited to attend this two day professional development designed to build the pipeline of prepared students and trained teachers in pre-AP teaching strategies.

### **AP Summer Institutes Summer, 2017:**

- 520 scholarships for 2017 AP Summer Institutes will be made available for AP teachers in each LEA this spring.

## NC Advanced Placement Partnership Annual Report

Sept. 16, 2016

**AP Performance:** number students testing, number exams, and number passing exams by public school:

District	High School Name	Number of Students	Number of AP Exams	Number of AP Exams 3+
Alamance-Burlington	Alamance-Burlington Middle College	0	0	-
Alamance-Burlington	Walter M Williams High School	227	459	167
Alamance-Burlington	Western Alamance High School	231	510	249
Alamance-Burlington	East Wilkes High School	32	44	11
Alamance-Burlington	Graham High School	131	238	12
Alamance-Burlington	Hugh M Cummings High School	82	135	28
Alamance-Burlington	Southern Alamance High School	194	328	113
Alexander County	Alexander Central High School	139	238	113
Alleghany County	Alleghany High School	<10	<10	<10
Anson County	Anson Challenge Academy	<10	<10	-
Anson County	Anson County Early College	0	0	-
Anson County	Anson High School	44	70	<10
Anson County	Anson New Technology High School	<10	<10	-
Ashe County	Ashe County High School	100	157	113
Asheboro City	Asheboro High School	152	210	95
Asheville City	Asheville High School	256	556	364
Asheville City Schools	School of Inquiry and Life Sciences	123	203	124
Avery County	Avery County High School	70	92	24
Avery County	Avery High STEM Academy	0	0	-
Bear Grass Charter	Bear Grass Charter School	<10	<10	-
Beaufort County	Beaufort County Early College High School	0	0	-
Beaufort County	Beaufort County Educational Technology Cnt	<10	<10	-
Beaufort County	Washington Senior High School	117	168	58
Beaufort County	Northside High School	144	219	51
Beaufort County	Southside High School	12	16	<10
Bertie County	Bertie High School	0	0	-
Bertie County	The Bertie School of Sci, Tech, Eng, and Math	<10	<10	0
Bertie County	Bertie Early College High School	<10	<10	-
Bladen County	West Bladen High School	42	49	<10
Bladen County	East Bladen High School	0	0	-
Brunswick County	Brunswick County Early College High School	<10	<10	-
Brunswick County	West Brunswick High School	136	319	105
Brunswick County	North Brunswick High School	65	100	27
Brunswick County	South Brunswick High School	154	345	170
Buncombe County	Buncombe County Middle College	0	0	-
Buncombe County	Charles D. Owen High School	126	221	133
Buncombe County	T C Roberson High School	371	801	441
Buncombe County	A C Reynolds High School	237	376	235

## NC Advanced Placement Partnership Annual Report

Sept. 16, 2016

District	High School Name	Number of Students	Number of AP Exams	Number of AP Exams 3+
Buncombe County	Buncombe County Early College	0	0	-
Buncombe County	Clyde A Erwin High School	110	158	71
Buncombe County	Elkin High School	72	135	74
Buncombe County	North Buncombe High School	226	424	225
Burke County	Freedom High School	150	249	136
Burke County	Robert Logan Patton High School	226	436	164
Burke County	Burke Middle College	0	0	-
Burke County	East Burke High School	115	158	50
Burke County	Jimmy C Draughn High School	68	88	30
Cabarrus County	Cabarrus County Schools Performance Learning	<10	<10	-
Cabarrus County	Cabarrus-Kannapolis Early College High School	<10	<10	-
Cabarrus County	Central Cabarrus High School	247	482	207
Cabarrus County	Concord High School	159	270	134
Cabarrus County	Cox Mill High School	407	840	319
Cabarrus County	Hickory Ridge High School	386	769	436
Cabarrus County	Northwest Cabarrus High School	224	448	219
Cabarrus County	Jay M Robinson High School	211	433	257
Cabarrus County	Mount Pleasant High School	77	116	55
Caldwell County	Caldwell Early College High School	0	0	-
Caldwell County	West Caldwell High School	71	121	26
Caldwell County	Caldwell Career Center Middle College	0	0	-
Caldwell County	Hibriten High School	111	185	64
Caldwell County	South Caldwell High School	251	383	123
Camden County	Camden County High School	30	45	25
Camden County	CamTech High School	0	0	-
Carolina International	Carolina International School	<10	<10	-
Carter G Woodson	Carter G Woodson School of Challenge	0	0	-
Carteret County	West Carteret High School	138	194	137
Carteret County	Croatan High School	140	239	167
Carteret County	East Carteret High School	33	50	33
Caswell County	Bartlett Yancey High School	64	99	20
Catawba County	Bandys High School	131	183	68
Catawba County	Bunker Hill High School	102	157	62
Catawba County	Challenger Early College High School	0	0	-
Catawba County	Fred T Foard High School	148	237	134
Catawba County	Maiden High School	127	165	62
Catawba County	Saint Stephen's High School	160	283	149
Chapel Hill-Carrboro	Chapel Hill High School	584	1,279	998
Chapel Hill-Carrboro	East Chapel Hill High School	654	1,588	1,235
Chapel Hill-Carrboro	Phoenix Academy High School	0	0	-

## NC Advanced Placement Partnership Annual Report

Sept. 16, 2016

District	High School Name	Number of Students	Number of AP Exams	Number of AP Exams 3+
Charlotte-Mecklenburg	Ardrey Kell High School	1,326	2,351	1,942
Charlotte-Mecklenburg	David W Butler High School	395	813	548
Charlotte-Mecklenburg	East Mecklenburg High School	165	332	165
Charlotte-Mecklenburg	Garinger High School	114	263	29
Charlotte-Mecklenburg	Harding University High School	14	14	<10
Charlotte-Mecklenburg	Hawthorne Academy of Health Sciences	38	54	12
Charlotte-Mecklenburg	Hopewell High School	348	654	241
Charlotte-Mecklenburg	Independence High School	264	452	242
Charlotte-Mecklenburg	Leadership & Entrepreneurial Development OHS	38	93	11
Charlotte-Mecklenburg	Levine Middle College High School	66	89	49
Charlotte-Mecklenburg	Mallard Creek High School	498	911	377
Charlotte-Mecklenburg	Math, Engineering, Technology, and Science OHS	156	327	89
Charlotte-Mecklenburg	Military and Global Leadership Academy MGD	75	129	14
Charlotte-Mecklenburg	Myers Park High School	743	1,425	764
Charlotte-Mecklenburg	North Mecklenburg Senior High School	256	388	96
Charlotte-Mecklenburg	Northwest School of the Arts	174	295	126
Charlotte-Mecklenburg	Olympic High School Biotech/Health/Public Adm	81	182	55
Charlotte-Mecklenburg	Performance Learning Center	33	42	13
Charlotte-Mecklenburg	Phillip O Berry Academy of Technology	589	1,076	164
Charlotte-Mecklenburg	Providence High School	708	1,381	1,138
Charlotte-Mecklenburg	Renaissance School at Olympic	85	147	49
Charlotte-Mecklenburg	Rocky River High School	175	277	80
Charlotte-Mecklenburg	South Mecklenburg High School	914	1,675	1,032
Charlotte-Mecklenburg	Tech Entrepreneurship & Adv. Manufacturing	19	37	0
Charlotte-Mecklenburg	Turning Point Academy	0	0	-
Charlotte-Mecklenburg	West Charlotte High School	92	152	<10
Charlotte-Mecklenburg	West Mecklenburg High School	196	320	26
Charlotte-Mecklenburg	William Amos Hough High School	793	1,495	991
Charlotte-Mecklenburg	Zebulon B Vance High School	170	297	24
Charlotte-Mecklenburg	Cato Middle College High School	83	121	51
Charlotte-Mecklenburg	Cochrane Collegiate Academy	16	23	0
Chatham Charter	Chatham Charter School	0	0	-
Chatham County	Chatham Central High School	52	84	28
Chatham County	Jordan Matthews High School	106	163	68
Chatham County	Northwood High School	235	482	259
Cherokee County	Andrews High School	<10	<10	<10
Cherokee County	Hiwassee Dam High School	23	30	<10
Cherokee County	Murphy High School	81	107	23
Clay County	Hayesville High School	13	17	12
Cleveland County	Burns High School	154	306	122

## NC Advanced Placement Partnership Annual Report

Sept. 16, 2016

District	High School Name	Number of Students	Number of AP Exams	Number of AP Exams 3+
Cleveland County	Crest High School	269	364	144
Cleveland County	Kings Mountain High School	230	366	176
Cleveland County	Cleveland Early College High School	<10	<10	<10
Cleveland County	Crest High School	285	394	169
Cleveland County	Kings Mountain High School	258	411	174
Cleveland County	Shelby High School	171	294	121
Clinton City	Clinton High School	114	216	81
Clover Garden School	Clover Garden School	<10	<10	-
Columbus County	Columbus Career And College Academy	0	0	-
Columbus County	South Columbus High School	47	77	15
Columbus County	West Columbus High School	40	52	<10
Columbus County	East Columbus High School	35	42	<10
Com School Davidson	Community School of Davidson	262	436	199
Commonwealth High	Commonwealth High School	0	0	-
Craven County	West Craven High School	47	63	<10
Craven County	Craven Early College High School	0	0	-
Craven County	Early College EAST High School	<10	<10	-
Craven County	Havelock High School	171	340	66
Craven County	New Bern High School	217	351	113
Crossroads Charter	Cross Roads Charter High School	<10	<10	-
Cumberland County	Pine Forest High School	225	404	70
Cumberland County	Terry Sanford Senior High School	349	692	220
Cumberland County	Westover High School	69	89	<10
Cumberland County	Cape Fear High School	148	282	151
Cumberland County	Cross Creek Early College High School	0	0	-
Cumberland County	Cumberland International Early College High	0	0	-
Cumberland County	Douglas Byrd High School	93	133	11
Cumberland County	E E Smith High School	70	127	24
Cumberland County	Grays Creek High School	174	397	66
Cumberland County	Howard Health and Life Sciences High School	0	0	-
Cumberland County	Jack Britt High School	416	899	428
Cumberland County	Massey Hill Classical High School	64	151	65
Cumberland County	Reid Ross Classical School	57	86	<10
Cumberland County	Seventy First High School	73	99	18
Cumberland County	South View High School	80	113	23
Cumberland County	Walker Spivey Secondary School	<10	<10	0
Currituck County	Currituck County High School	98	165	78
Currituck County	JP Knapp Early College High School	<10	<10	0
Dare County	Cape Hatteras Secondary School	12	22	<10
Dare County	First Flight High School	188	303	178

## NC Advanced Placement Partnership Annual Report

Sept. 16, 2016

District	High School Name	Number of Students	Number of AP Exams	Number of AP Exams 3+
Dare County	Manteo High School	172	241	73
Davidson County	Central Davidson Senior High School	111	217	68
Davidson County	North Davidson High School	291	577	268
Davidson County	West Davidson High School	131	303	71
Davidson County	Yadkin Valley Regional Career Academy	0	0	-
Davidson County	Davidson Early College High School	0	0	-
Davidson County	East Davidson High School	81	147	79
Davidson County	Ledford High School	199	289	157
Davidson County	South Davidson High School	67	98	40
Davie County	Davie County Early College High School	0	0	-
Davie County	Davie High School	343	600	324
Duplin County	North Duplin Junior-Senior High School	30	59	20
Duplin County	Wallace Rose Hill High School	50	73	18
Duplin County	Duplin Early College High School	0	0	-
Duplin County	East Duplin High School	63	88	35
Duplin County	James Kenan High School	51	57	11
Durham Public	Southern High School	99	134	14
Durham Public	Charles E. Jordan Senior High School	512	966	652
Durham Public	City of Medicine Academy	83	135	59
Durham Public	Durham Performance Learning Center	0	0	-
Durham Public	Durham School of the Arts	268	553	426
Durham Public	Hillside New Tech High School	42	51	<10
Durham Public	Middle College High School at Durham Technical	0	0	-
Durham Public	Hillside High School	87	97	11
Durham Public	Josephine Dobbs Clement Early College High	0	0	-
Durham Public	Northern High School	307	548	131
Durham Public	Riverside High School	342	671	345
Durham Public	Southern School of Engineering	138	159	<10
East Wake Academy	East Wake Academy	46	69	40
Edenton-Chowan	John A Holmes High School	60	109	18
Edgecombe County	Eastern Wayne High School	94	149	45
Edgecombe County	Southwest Edgecombe High School	32	43	12
Edgecombe County	Tarboro High School	34	41	<10
Edgecombe County	North Edgecombe High School	<10	<10	0
Elizab City-Pasquotank	Northeastern High School	64	96	27
Elizab City-Pasquotank	Pasquotank County High School	25	30	<10
Elkin City Schools	Elkin High School	72	135	74
Franklin Academy	Franklin Academy High School	111	212	155
Franklin County	Bunn High School	112	170	71
Franklin County	Franklin County Early College High School	0	0	-



## NC Advanced Placement Partnership Annual Report

Sept. 16, 2016

District	High School Name	Number of Students	Number of AP Exams	Number of AP Exams 3+
Franklin County	Franklinton High School	172	246	110
Franklin County	Louisburg High School	71	117	28
Gaston College Prep	KIPP Pride High School	187	330	47
Gaston County	Ashbrook Senior High School	151	259	44
Gaston County	Bessemer City High School	42	104	10
Gaston County	Cherryville High School	82	131	57
Gaston County	Gaston Early College High School	0	0	-
Gaston County	North Gaston Senior High School	57	95	32
Gaston County	Stuart W Cramer High School	125	242	78
Gaston County	East Gaston High School	105	180	42
Gaston County	Forestview High School	83	149	71
Gaston County	Highland School of Technology	85	164	110
Gaston County	Hunter Huss High School	13	14	0
Gaston County	South Point High School	188	354	134
Gates County	Gates County High School	18	26	19
Graham County	Robbinsville High School	32	44	12
Granville County	Granville Central High School	25	36	<10
Granville County	Granville Early College High School	0	0	-
Granville County	Granville Magnet School	26	57	<10
Granville County	J F Webb School of Health Sciences	82	122	49
Granville County	J F Webb High School	13	25	<10
Granville County	South Granville High School of Integrated Tech	59	81	<10
Granville County	South Granville School of Health and Life Sci	69	100	<10
Gray Stone Day	Gray Stone Day School	194	345	244
Greene County	Greene County Early College High School	0	0	-
Greene County	Greene Central High School	67	111	26
Guilford County	Ben L Smith High School	165	283	15
Guilford County	GTCC Early-Middle College	0	0	-
Guilford County	Middle College at A and T State University	0	0	-
Guilford County	Middle College at Bennett	0	0	-
Guilford County	Middle College at GTCC Greensboro	0	0	-
Guilford County	Middle College at UNCG	60	89	35
Guilford County	Northeast Guilford High School	121	170	58
Guilford County	Northern Guilford High School	514	1,073	603
Guilford County	Northwest Guilford High School	736	1,576	1,021
Guilford County	Ragsdale High School	350	708	265
Guilford County	School Community Alternative Learning Environ	0	0	-
Guilford County	Southeast Guilford High School	236	426	265
Guilford County	Southern Guilford High School	223	402	174
Guilford County	Eastern Guilford High School	118	178	65

## NC Advanced Placement Partnership Annual Report

Sept. 16, 2016

District	High School Name	Number of Students	Number of AP Exams	Number of AP Exams 3+
Guilford County	Southwest Guilford High School	461	993	382
Guilford County	STEM Early College at North Carolina A&T	98	246	91
Guilford County	T Wingate Andrews High School	74	137	21
Guilford County	The Academy at High Point Central	15	30	13
Guilford County	The Academy at Smith	59	95	28
Guilford County	The Early College at Guilford	104	281	273
Guilford County	The Middle College at GTCC High Point	0	0	-
Guilford County	Twilight High School	0	0	-
Guilford County	Walter Hines Page High School	696	1,349	673
Guilford County	Weaver Academy	131	262	198
Guilford County	Western Guilford High School	407	869	387
Guilford County	William Penn-Griffin School for the Arts	87	206	74
Guilford County	Greensboro College Middle College	64	76	22
Guilford County	Grimsley High School	633	1,113	693
Guilford County	High Point Central High School	298	555	231
Guilford County	James B Dudley Senior High School	228	355	24
Halifax County	Northwest Halifax High School	<10	<10	<10
Halifax County	Southeast Halifax High School	0	0	-
Haliwa-Saponi Tribal	Haliwa Saponi Tribal School	0	0	-
Harnett County	Triton High School	97	173	44
Harnett County	Western Harnett High School	67	144	40
Harnett County	Harnett Central High School	126	214	91
Harnett County	Overhills High School	132	196	73
Hawbridge School	Hawbridge School	45	80	52
Haywood County	Tuscola High School	129	204	56
Haywood County	Haywood Early College High School	0	0	-
Haywood County	Pisgah High School	65	87	35
Henderson County	Hendersonville High School	138	262	147
Henderson County	West Henderson High School	155	265	100
Henderson County	East Henderson High School	99	155	75
Henderson County	Henderson County Early College High School	<10	<10	0
Henderson County	North Henderson High School	145	221	120
Hertford County	C S Brown High School	0	0	-
Hertford County	Hertford County High School	<10	<10	<10
Hertford County	Hertford County Early College High School	0	0	-
Hickory City	Hickory Career and Arts Magnet High School	0	0	-
Hickory City	Hickory High School	128	190	97
Hoke County	Hoke County High School	254	338	60
Hoke County	SandHoke Early College School	0	0	-
Hoke County	Turlington School	0	0	-

## NC Advanced Placement Partnership Annual Report

Sept. 16, 2016

District	High School Name	Number of Students	Number of AP Exams	Number of AP Exams 3+
Hyde County	Ocracoke High School	<10	11	<10
Invest Collegiate Imagi	Invest Collegiate Imagine	<10	<10	-
Iredell-Statesville	Career Academy and Technical School	<10	<10	<10
Iredell-Statesville	South Iredell High School	342	439	136
Iredell-Statesville	Statesville High School	147	245	56
Iredell-Statesville	West Iredell High School	100	130	44
Iredell-Statesville	Collaborative College for Technology & Lead	0	0	-
Iredell-Statesville	Lake Norman High School	612	996	678
Iredell-Statesville	North Iredell High School	161	205	113
Jackson County	Blue Ridge Early College	0	0	-
Jackson County	Jackson County Early College High School	0	0	-
Jackson County	Smoky Mountain High School	57	85	45
Johnston County	Clayton High School	170	236	127
Johnston County	Cleveland High School	122	180	97
Johnston County	Johnston County Early College Academy	0	0	-
Johnston County	Johnston County Middle College High School	0	0	-
Johnston County	North Johnston High School	<10	<10	<10
Johnston County	West Johnston High School	117	172	117
Johnston County	Corinth Holders High School	157	229	167
Johnston County	Princeton High School	14	18	<10
Johnston County	Smithfield-Selma High School	79	86	21
Johnston County	South Campus Community School	0	0	-
Johnston County	South Johnston High School	43	62	16
Jones County	Jones Senior High School	23	23	<10
Kannapolis City	A L Brown Senior High School	134	216	112
Kennedy Charter Public	Kennedy Charter Public School	0	0	-
Kestrel Heights School	Kestrel Heights School	29	36	13
Lake Lure Classical Acd	Lake Lure Classical Academy	<10	<10	<10
Lake Norman Charter	Lake Norman Charter School	317	557	451
Lee County	Lee County Senior High School	120	180	83
Lee County	Lee Early College High School	<10	<10	0
Lee County	Southern Lee High School	119	200	83
Lenoir County	Lenoir County Early College High School	<10	<10	-
Lenoir County	Kinston High School	12	17	<10
Lenoir County	North Lenoir High School	70	102	42
Lenoir County	South Lenoir High School	26	47	32
Lexington City	Lexington Senior High School	89	196	45
Lincoln Charter School	Lincoln Charter School	96	156	89
Lincoln County	North Lincoln High School	230	460	271
Lincoln County	West Lincoln High School	140	264	71

## NC Advanced Placement Partnership Annual Report

Sept. 16, 2016

District	High School Name	Number of Students	Number of AP Exams	Number of AP Exams 3+
Lincoln County	Lincolnton High School	125	238	82
Longleaf School of Arts	Longleaf School of the Arts	81	132	65
Macon County	Franklin High School	70	99	70
Macon County	Highlands High School	22	36	20
Macon County	Macon Early College High School	<10	<10	<10
Macon County	Nantahala School	0	0	-
Madison County	Madison Early College High School	0	0	-
Madison County	Madison High School	58	73	34
Martin County	Riverside High School	<10	10	<10
Martin County	South Creek High School	18	18	<10
McDowell County	McDowell Early College High School	0	0	-
McDowell County	McDowell High School	70	97	38
Mills Park Middle	Mills Park Middle School	<10	<10	-
Mitchell County	Mitchell High School	38	71	49
Montgomery County	West Montgomery High School	17	18	<10
Montgomery County	East Montgomery High School	33	33	12
Montgomery County	Montgomery Learning Academy	<10	<10	<10
Moore County	Union Pines High School	292	481	194
Moore County	North Moore High School	78	90	14
Moore County	Pinecrest High School	590	1,349	778
Mooreville Graded	Mooreville Senior High School	392	631	366
Mount Airy City	Mount Airy High School	102	144	77
Mountain Isl Charter	Mountain Island Charter School	31	46	32
Nash-Rocky Mount	Nash Rocky Mount Early College High School	0	0	-
Nash-Rocky Mount	Nash Central High School	65	89	30
Nash-Rocky Mount	Northern Nash High School	95	145	40
Nash-Rocky Mount	Rocky Mount High School	55	82	<10
Nash-Rocky Mount	Southern Nash High School	43	51	24
North Carolina SA	University of North Carolina School of the Arts	134	257	222
North Carolina SSM	North Carolina School of Science and Math	408	817	736
Neuse Charter School	Neuse Charter School	45	75	54
New Hanover County	E A Laney High School	251	480	252
New Hanover County	John T Hoggard High School	513	1,114	585
New Hanover County	Wilmington Early College High School	0	0	-
New Hanover County	Eugene Ashley High School	277	445	195
New Hanover County	Isaac Bear Early College High School	0	0	-
New Hanover County	New Hanover High School	440	934	557
New Hanover County	Mary S Mosley Performance Learning Center	0	0	-
Newton Conover City	Discovery High School At Newton-Conover	96	139	38
Newton Conover City	Newton Conover High School	95	165	78

## NC Advanced Placement Partnership Annual Report

Sept. 16, 2016

District	High School Name	Number of Students	Number of AP Exams	Number of AP Exams 3+
Northampton County	Northampton County High School	25	51	<10
Onslow County	Southwest High School	73	115	31
Onslow County	Swansboro High School	72	142	66
Onslow County	White Oak High School	92	151	73
Onslow County	Dixon High School	78	157	44
Onslow County	Jacksonville High School	99	134	41
Onslow County	Northside High School	144	219	51
Onslow County	Richlands High School	97	170	41
Orange County	Cedar Ridge High School	220	412	256
Orange County	Orange High School	169	370	226
Oxford Preparatory	Oxford Preparatory High School	65	69	14
PACE Academy	PACE Academy	<10	<10	<10
Paisley Magnet School	Paisley Magnet School	22	22	10
Pamlico County	Pamlico County High School	64	84	23
Pender County	Pender Early College High School	<10	<10	<10
Pender County	Pender High School	69	111	21
Pender County	Topsail High School	196	272	169
Pender County	Heide Trask High School	57	93	17
Perquimans County	Perquimans County High School	16	18	11
Person County	Person High School	145	204	84
Piedmont Com Charter	Piedmont Community Charter - Secondary	37	44	11
Pine Lake Preparatory	Pine Lake Preparatory	209	319	203
Pitt County	Ayden-Grifton High School	64	117	20
Pitt County	D H Conley High School	307	606	222
Pitt County	North Pitt High School	127	207	47
Pitt County	Farmville Central High School	85	144	21
Pitt County	Junius H Rose High School	307	747	428
Pitt County	South Central High School	176	355	175
Polk County	Polk County Early College	0	0	-
Polk County	Polk County High School	47	67	50
Quality Education Acad	Quality Education Academy	0	0	-
Queens Grant Comm	Queens Grant High School	46	79	27
Raleigh Charter HS	Raleigh Charter High School	335	833	767
Randolph County	Randolph Early College High School	0	0	-
Randolph County	Trinity High School	107	179	71
Randolph County	Wheatmore High School	76	116	52
Randolph County	Eastern Randolph High School	79	135	27
Randolph County	Providence Grove High School	112	191	76
Randolph County	Randleman High School	111	183	55
Randolph County	Southwestern Randolph High School	98	206	38

## NC Advanced Placement Partnership Annual Report

Sept. 16, 2016

District	High School Name	Number of Students	Number of AP Exams	Number of AP Exams 3+
Research Triangle High	Research Triangle High School	170	359	228
Richmond County	Richmond County Ninth Grade Academy	17	17	<10
Richmond County	Richmond Early College High School	0	0	-
Richmond County	Richmond Senior High School	199	397	72
River Mill Academy	River Mill Academy	38	68	19
Roanoke Rapids City	Roanoke Rapids High School	114	229	66
Robeson County	Fairmont High School	61	62	<10
Robeson County	Lumberton High School	347	523	56
Robeson County	Purnell Swett High School	148	195	19
Robeson County	Red Springs High School	<10	<10	<10
Robeson County	Robeson County Early College High School	<10	<10	0
Robeson County	Saint Paul's High School	32	41	11
Robeson County	South Robeson High School	<10	<10	0
Rockingham County	Dalton L McMichael High School	88	161	23
Rockingham County	John Motley Morehead High School	89	125	11
Rockingham County	Reidsville High School	0	0	-
Rockingham County	Rockingham County High School	69	102	46
Rockingham County	Rockingham Early College High School	<10	<10	0
Rockingham County	Second Chance Opportunity & Resource Educat	<10	<10	-
Rocky Mount Prep	Rocky Mount Preparatory School	<10	<10	<10
Rowan County	North Rowan High School	118	220	<10
Rowan-Salisbury	Jesse C Carson High School	209	317	98
Rowan-Salisbury	Rowan County Early College	0	0	-
Rowan-Salisbury	West Rowan High School	128	200	60
Rowan-Salisbury	East Rowan High School	132	230	63
Rowan-Salisbury	Salisbury High School	152	396	154
Rowan-Salisbury	South Rowan High School	143	261	31
Roxboro Community	Roxboro Community School	98	141	57
Rutherford County	Chase High School	88	160	44
Rutherford County	East Rutherford High School	62	100	20
Rutherford County	Rutherford Early College High School	0	0	-
Rutherford County	Rutherfordton-Spindale Central High School	98	172	64
Sampson County	Hobbton High School	50	70	16
Sampson County	Union High School	19	25	<10
Sampson County	Lakewood High School	43	79	22
Sampson County	Midway High School	57	78	41
Sampson County	Sampson Early College High School	0	0	-
School For Creative Stu	School For Creative Studies	32	41	21
Scotland County	Scotland Early College High School	0	0	-
Scotland County	Scotland High School	143	240	55

## NC Advanced Placement Partnership Annual Report

Sept. 16, 2016

District	High School Name	Number of Students	Number of AP Exams	Number of AP Exams 3+
Stanley County	West Stanly High School	51	70	35
Stanly County	North Stanly High School	40	59	17
Stanly County	Albemarle High School	21	24	<10
Stanly County	South Stanly High School	16	25	<10
Stanly County Schools	Stanly Early College High School	<10	<10	0
Stokes County	North Stokes High School	44	68	22
Stokes County	Stokes Early College High School	0	0	-
Stokes County	West Stokes High School	60	100	58
Stokes County	South Stokes High School	52	81	39
Surry County	North Surry High School	62	100	36
Surry County	Surry Central High School	78	131	66
Surry County	Surry Early College High School of Design	0	0	-
Surry County	East Surry High School	69	129	87
Swain County	Swain County High School	60	93	56
Thomas Jefferson	Thomas Jefferson Classical Academy	157	283	196
Thomasville City	Thomasville Senior High School	53	84	15
Transylvania County	Rosman High School	38	65	23
Transylvania County	Brevard Senior High School	101	145	84
Triad Math & Sci Acad	Triad Math And Science Academy	12	16	<10
Tyrrell County	Columbia High School	<10	<10	<10
Union Acad Charter	Union Academy	125	241	109
Union County	Central Academy of Technology and Arts	198	322	193
Union County	Forest Hills High School	100	155	61
Union County	Marvin Ridge High School	497	1,006	798
Union County	Sun Valley High School	150	209	137
Union County	Union County Career Center	<10	<10	-
Union County	Union County Early College	0	0	-
Union County	Weddington High School	462	862	592
Union County	Cuthbertson High School	463	790	598
Union County	Monroe High School	81	112	35
Union County	Parkwood High School	120	197	103
Union County	Piedmont High School	144	214	157
Union County	Porter Ridge High School	228	411	217
Uwharrie Charter	Uwharrie Charter Academy	57	81	20
Vance County	Vance County Early College High School	0	0	-
Vance County	Northern Vance Senior High School	96	204	19
Vance County	Southern Vance High School	83	134	10
Voyager Academy	Voyager Academy	161	297	104
Wake County	Athens Drive Senior High School	424	843	578
Wake County	Garner Magnet High School	357	670	156

## NC Advanced Placement Partnership Annual Report

Sept. 16, 2016

District	High School Name	Number of Students	Number of AP Exams	Number of AP Exams 3+
Wake County	Millbrook High School	655	1,258	612
Wake County	Needham B Broughton High School	414	782	491
Wake County	Panther Creek High School	1,067	2,251	1,626
Wake County	Vernon Malone College & Career Academy	0	0	-
Wake County	Visual and Performing Arts Center	0	0	-
Wake County	Wake STEM Early College High School	50	50	32
Wake County	Wake Forest High School	349	764	364
Wake County	Wake Young Mens Leadership Academy	10	10	<10
Wake County	Wake Young Womens Leadership Academy	47	51	35
Wake County	Wakefield High School	501	990	582
Wake County	Apex High School	650	1,268	958
Wake County	Athens Drive High School	424	843	578
Wake County	Cary High School	434	854	617
Wake County	Apex Friendship High School	96	98	44
Wake County	East Wake High School	185	397	93
Wake County	Enloe Magnet High School	867	2,434	1,936
Wake County	Fuquay-Varina Senior High School	407	752	419
Wake County	Garner Magnet High School	357	670	156
Wake County	Green Hope High School	979	2,136	1,683
Wake County	Heritage High School	535	1,066	558
Wake County	Holly Springs High School	710	1,308	734
Wake County	Knightdale High School	375	746	101
Wake County	Leesville Road High School	463	903	635
Wake County	Middle Creek High School	586	1,299	867
Wake County	Phillips High School	0	0	-
Wake County	Rolesville High School	215	348	134
Wake County	Sanderson High School	292	563	391
Wake County	Southeast Raleigh High School	120	220	68
Warren County	Warren County High School	14	17	<10
Warren County	Warren Early College High School	0	0	-
Warren County	Warren New Tech High School	13	21	<10
Washington County	Creswell High School	<10	<10	<10
Washington County	Plymouth High School	<10	<10	0
Watauga County	Watauga High School	220	456	316
Wayne County	Rosewood High School	26	30	<10
Wayne County	Wayne Early-Middle College High School	<10	<10	-
Wayne County	Wayne School of Engineering	0	0	-
Wayne County	Eastern Wayne High School	77	160	41
Wayne County	Wayne Technical Academy	0	0	-
Wayne County	Charles B. Aycock High School	142	236	63



## NC Advanced Placement Partnership Annual Report

Sept. 16, 2016

District	High School Name	Number of Students	Number of AP Exams	Number of AP Exams 3+
Wayne County	Goldsboro High School	18	19	<10
Wayne County	Southern Wayne High School	38	51	<10
Wayne County	Spring Creek High School	24	29	10
Weldon City	Roanoke Valley Early College High School	0	0	-
Weldon City	Weldon STEM High School	0	0	-
Whiteville City	Whiteville High School	21	46	11
Wilkes County	North Wilkes High School	38	52	21
Wilkes County	West Wilkes High School	71	90	53
Wilkes County	Wilkes Central High School	55	81	43
Wilkes County	Wilkes Early College High School	0	0	-
Wilkes County	East Wilkes High School	32	44	11
Wilson County	Wilson Early College Academy	0	0	-
Wilson County	Beddingfield High School	50	77	<10
Wilson County	Fike High School	151	267	84
Wilson County	Hunt High School	111	205	79
Winston Salem-Forsyth	Atkins Academic/Technology High School	161	306	219
Winston Salem-Forsyth	Forsyth Middle College	0	0	-
Winston Salem-Forsyth	John F Kennedy High School	<10	<10	<10
Winston Salem-Forsyth	Mount Tabor High School	437	1,136	680
Winston Salem-Forsyth	Paisley Magnet School	22	22	10
Winston Salem-Forsyth	Ronald Wilson Reagan High School	603	1,469	1,054
Winston Salem-Forsyth	Walkertown High School	62	122	46
Winston Salem-Forsyth	West Forsyth High School	683	1,593	1,053
Winston Salem-Forsyth	Winston-Salem County Schools: Career Center	<10	<10	<10
Winston Salem-Forsyth	Winston-Salem Preparatory Academy	41	62	<10
Winston Salem-Forsyth	Carver High School	10	13	<10
Winston Salem-Forsyth	Early College of Forsyth	0	0	-
Winston Salem-Forsyth	East Forsyth High School	354	686	357
Winston Salem-Forsyth	North Forsyth High School	97	158	45
Winston Salem-Forsyth	Parkland High School	<10	<10	0
Winston Salem-Forsyth	R J Reynolds High School	474	1,206	779
Winston Salem-Forsyth	Robert B Glenn High School	152	275	109
Woods Charter	Woods Charter School	93	197	146
Yadkin County	Starmount High School	14	14	<10
Yadkin County	Yadkin Early College High School	0	0	-
Yadkin County	Forbush High School	55	79	47
Yancey County	Mountain Heritage High School	30	52	41
<b>Total</b>		<b>69,957</b>	<b>129,538</b>	<b>66,646</b>

## NC Advanced Placement Partnership Annual Report

Sept. 16, 2016

- Student performance on AP examinations, including information by local school administrative unit, and school for the 23 targeted NCAPP districts:

District	High School Name	Number of Students	Number of AP Exams	Number of AP Exams 3+
Anson County	Anson Challenge Academy	<10	<10	-
Anson County	Anson County Early College	0	0	-
Anson County	Anson High School	44	70	<10
Anson County	Anson New Technology High School	<10	<10	-
Bertie County	Bertie High School	0	0	-
Bertie County	The Bertie School of Sci, Tech, Eng, and Math	<10	<10	0
Bertie County	Bertie Early College High School	<10	<10	-
Clinton City	Clinton High School	114	216	81
Columbus County	Columbus Career And College Academy	0	0	-
Columbus County	South Columbus High School	47	77	15
Columbus County	West Columbus High School	40	52	<10
Duplin County	North Duplin Junior-Senior High School	30	59	20
Duplin County	Wallace Rose Hill High School	50	73	18
Duplin County	Duplin Early College High School	0	0	-
Duplin County	East Duplin High School	63	88	35
Duplin County	James Kenan High School	51	57	11
Edgecombe County	Eastern Wayne High School	94	149	45
Edgecombe County	Southwest Edgecombe High School	32	43	12
Edgecombe County	Tarboro High School	34	41	<10
Edgecombe County	North Edgecombe High School	<10	<10	0
Greene County	Greene County Early College High School	0	0	-
Greene County	Greene Central High School	67	111	26
Hoke County	Hoke County High School	254	338	60
Hoke County	SandHoke Early College School	0	0	-
Hoke County	Turlington School	0	0	-
Lee County	Lee County Senior High School	120	180	83
Lee County	Lee Early College High School	<10	<10	0
Lee County	Southern Lee High School	119	200	83
Lenoir County	Lenoir County Early College High School	<10	<10	-
Lenoir County	Kinston High School	12	17	<10
Lenoir County	North Lenoir High School	70	102	42
Lenoir County	South Lenoir High School	26	47	32
Lexington City	Lexington Senior High School	89	196	45
Montgomery County	West Montgomery High School	17	18	<10
Montgomery County	East Montgomery High School	33	33	12
Montgomery County	Montgomery Learning Academy	<10	<10	<10
Nash-Rocky Mount	Nash Rocky Mount Early College High School	0	0	-
Nash-Rocky Mount	Nash Central High School	65	89	30
Nash-Rocky Mount	Northern Nash High School	95	145	40
Nash-Rocky Mount	Rocky Mount High School	55	82	<10
Nash-Rocky Mount	Southern Nash High School	43	51	24

## NC Advanced Placement Partnership Annual Report

Sept. 16, 2016

District	High School Name	Number of Students	Number of AP Exams	Number of AP Exams 3+
Northampton County	Northampton County High School	25	51	<10
Pitt County	Ayden-Grifton High School	64	117	20
Pitt County	D H Conley High School	307	606	222
Pitt County	North Pitt High School	127	207	47
Pitt County	Farmville Central High School	85	144	21
Pitt County	Junius H Rose High School	307	747	428
Pitt County	South Central High School	176	355	175
Richmond	Richmond Senior High School	178	319	75
Robeson County	Fairmont High School	61	62	<10
Robeson County	Lumberton High School	347	523	56
Robeson County	Purnell Swett High School	148	195	19
Robeson County	Red Springs High School	<10	<10	<10
Robeson County	Robeson County Early College High School	<10	<10	0
Robeson County	Saint Paul's High School	32	41	11
Robeson County	South Robeson High School	<10	<10	0
Sampson County	Hobbton High School	50	70	16
Sampson County	Union High School	19	25	<10
Sampson County	Lakewood High School	43	79	22
Sampson County	Midway High School	57	78	41
Sampson County	Sampson Early College High School	0	0	-
Scotland County	Scotland Early College High School	0	0	-
Scotland County	Scotland High School	143	240	55
Thomasville City	Thomasville Senior High School	53	84	15
Warren County	Warren County High School	14	17	<10
Warren County	Warren Early College High School	0	0	-
Warren County	Warren New Tech High School	13	21	<10
Washington County	Creswell High School	<10	<10	<10
Washington County	Plymouth High School	<10	<10	0
Wayne County	Rosewood High School	26	30	<10
Wayne County	Wayne Early-Middle College High School	<10	<10	-
Wayne County	Wayne School of Engineering	0	0	-
Wayne County	Eastern Wayne High School	77	160	41
Wayne County	Wayne Technical Academy	0	0	-
Wayne County	Goldsboro High School	18	19	<10
Wayne County	Southern Wayne High School	38	51	9
Wayne County	Spring Creek High School	24	29	10
<b>Total</b>		<b>4,115</b>	<b>6,821</b>	<b>2,006</b>